

1.



- A. Clydesdale
- C. Hackney

- B. Percheron
- D. Morgan

2.



A. Clydesdale

C. Arabian

B. Paint

D. Morgan

3.



- A. Morgan
- C. Arabian

- B. Icelandic Pony
- D. Shetland Pony

4.



A. Morgan

C. Arabian

B. American Saddlebred

D. Tennessee Walking Horse

5.



A. Morgan

C. Suffolk

B. Haflinger

D. Tennessee Walking Horse

6.



A. Oldenburg

C. Suffolk

B. Haflinger

D. Arabian

7.



A. Tennessee Walking Horse

C. Suffolk

B. Connemara

D. Quarter Horse

8.



- A. Clydesdale
- C. Thoroughbred

- B. Lippizan
- D. Arabian



9.



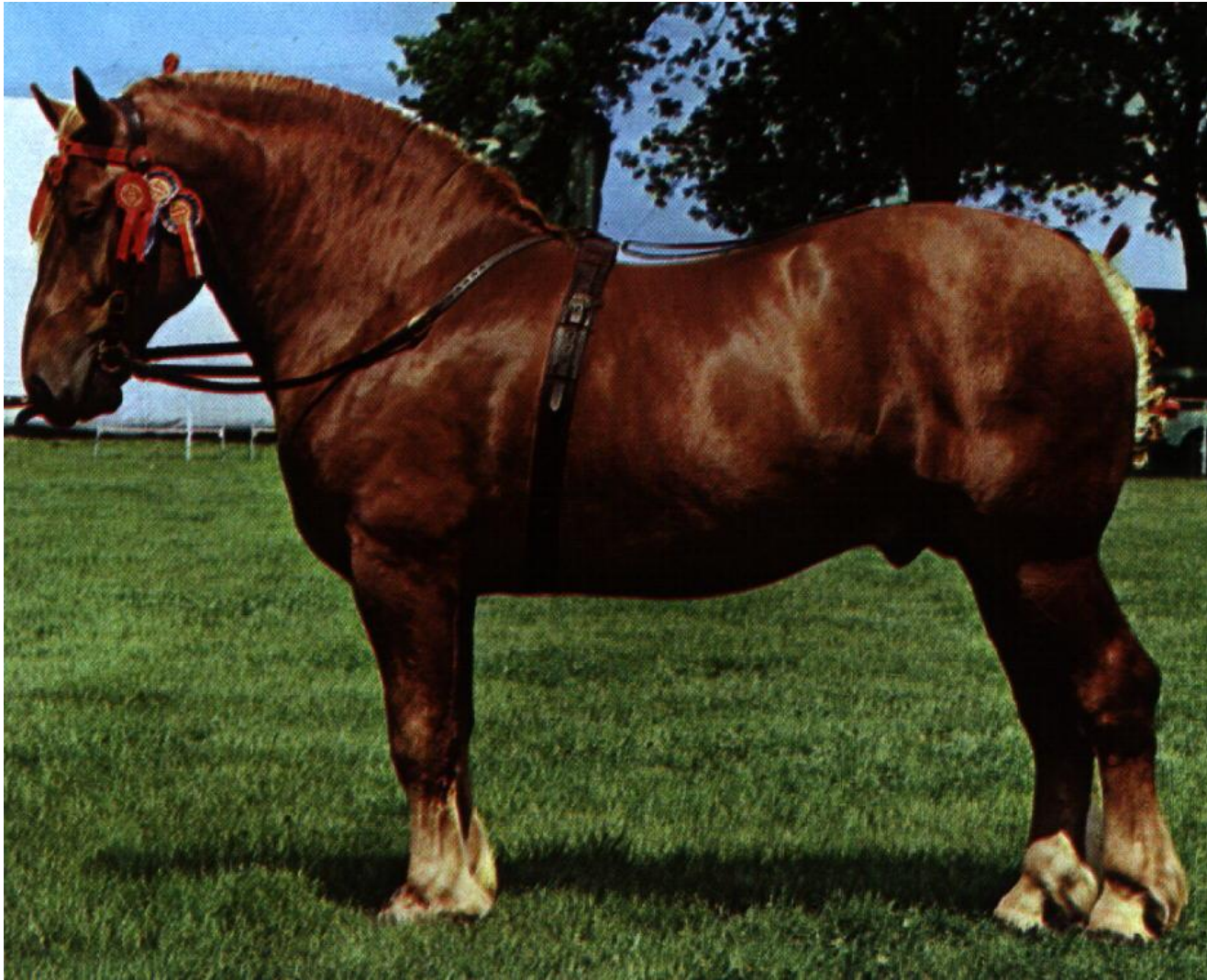
A. Haflinger

C. Thoroughbred

B. Lippizan

D. Arabian

10.



- A. Suffolk
- C. Percheron

- B. Clydesdale
- D. Shire

11.



What type of bit is this?

A. Kimberwick

C. Pelham

B. Snaffle

D. Smooth Snaffle

12.



What type of bit is this?

A. Kimberwick

C. Pelham

B. Snaffle

D. Smooth Snaffle

13.



What piece of equipment is this?

A. Splint boot

C. Pastern boot

B. Ankle boot

D. Skid boot

14.



What piece of equipment is this?

A. Surcingle

C. Caveson

B. Bridle

D. Grooming Halter

15.



What is the coat color pattern seen here?

A. Bay Tobiano

C. Sorrel Tobiano

B. Bay Overo

D. Sorrel Overo

16.



What is the coat color pattern seen here?

A. Bay Tobiano

C. Sorrel Tobiano

B. Bay Overo

D. Sorrel Overo



17.



What is the coat color seen here?

A. Grey

C. Grulla

B. Buckskin

D. Dun

18.



What is the coat color seen here?

A. Bay Roan

C. Cremello

B. Blue Roan

D. Dun

19.



Identify the leg marking seen above.

A. Sock

C. Pastern

B. Stocking

D. Half Pastern

19.



Identify the face marking seen above.

A. Strip

C. Nose

B. Stripe

D. Snip